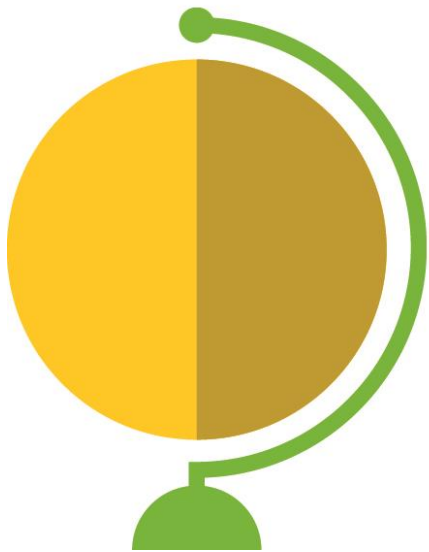


# Assurex Global Overview

---

# Assurex Global is an **exclusive Partnership** of the world's premier independent insurance agents and brokers.



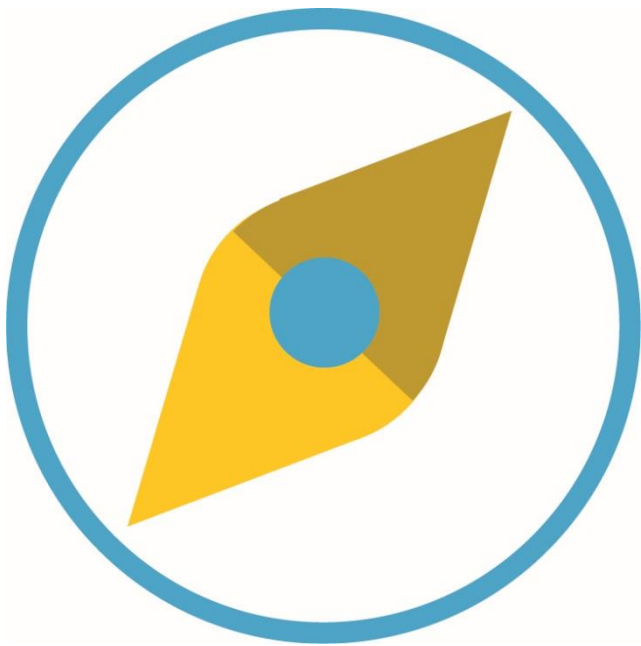
- 109 Partners
- 20 Employees
- Headquartered in Columbus, Ohio, USA
- Offices in the United Kingdom and India

---

# Five Reasons

To Engage an Assurex Global Partner

# 1 - Independence



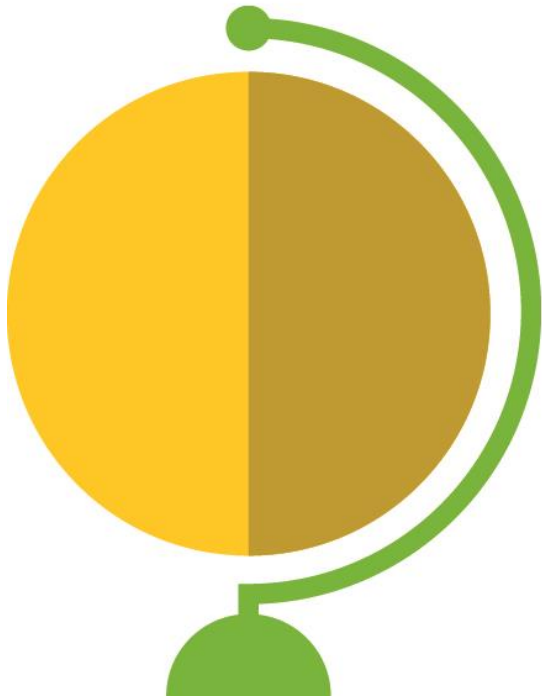
## Highly Entrepreneurial

- All Assurex Global Partners are independently owned and therefore highly entrepreneurial in their approach to servicing.
- Decisions get made.
- Responsiveness is a core value.
- We are free to act in your best interest; we make it work for you.

## 2 – Vetted & Invested



### High & Uncompromising Standards



- All Partners undergo an intensive evaluation process to assess their capability levels.
- Among the thousands of independent commercial insurance brokers worldwide, just over 100 are Partners in Assurex Global.
- All make a significant equity investment in Assurex Global, so they are fully committed to making all clients realize best value (skin in the game).
- That's why we are called Partners.

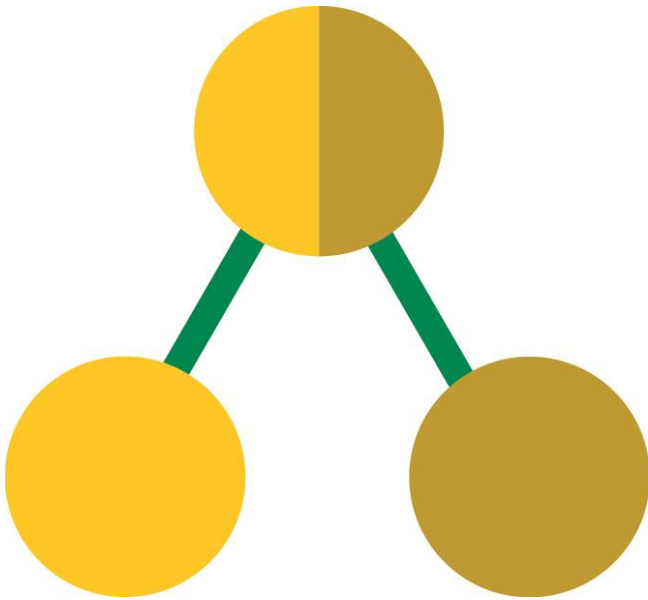
## 3 – Servicing Locally, Reaching Globally



### Equal Precision Worldwide

- Assurex Global's worldwide network, collaboration tools, and communications infrastructure, make it possible to service your accounts anywhere across the globe with equal precision and localized service.

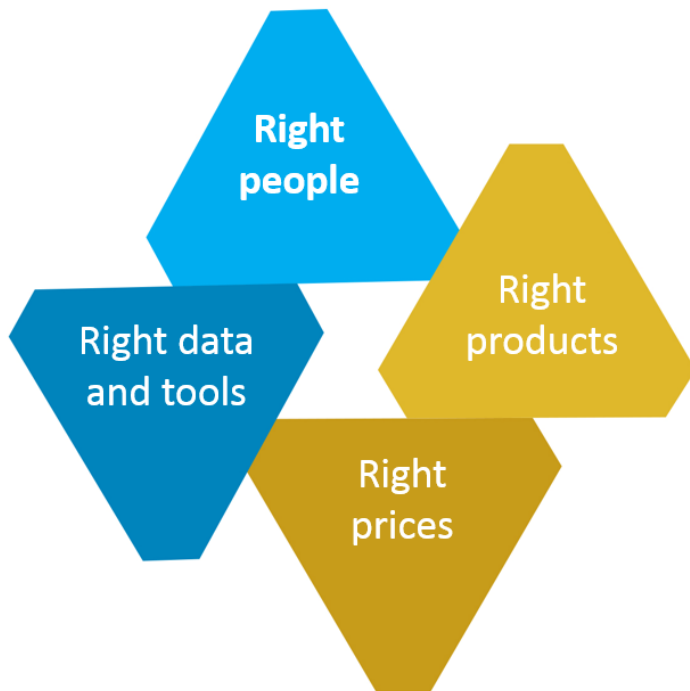
## 4 – One in Many; Many in One



### No Problem We Cannot Solve

- When you sign with an Assurex Global Partner, you not only get access to its specialized expertise, but also that of all experts within 100 plus Partners worldwide.
- There is no problem we cannot solve.

## 5 – Connected in All the Right Places



### Relationships & Resources

- Due to its collective bargaining power and 60-year history with carriers and industry vendors, you receive access to unmatched data, tools & products.



---

# Size & Scope

# NA Region

55 Partners

# EMEA Region

30 Partners

109

Partner firms

6

Continents

600+

Partner offices

# LAC Region

11 Partners

# Asia/Pacific Region

13 Partners

---

# World's Largest Insurance Brokers

Ranked by 2015 Brokerage Revenue

**1 Marsh**

619 offices / \$12.9B

**2 Aon**

500 offices / \$11.7B

**3 Willis Towers Watson**

500 offices / \$8.1B

**4 A.J. Gallagher**

570 offices / \$4B

**5 Assurex Global**

625 offices / \$2.9B

**6 JLT**

115 offices / \$1.7B

**7 BB&T Insurance**

112 offices / \$1.7B

**8 Brown & Brown**

236 offices / \$1.7B

**9 HUB International**

378 offices / \$1.5B

**10 Lockton**

78 offices / \$1.3B

Source: Business Insurance 7/2016. Assurex Global information provided by Assurex Global.

---

# Governance

## 2016 – 2017 ASSUREX GLOBAL BOARD OF DIRECTORS

---

**Matt Donnelly**

*Chairman*

Griffiths & Armour

**Jim Hackbarth**

*President & CEO*

Assurex Global

**Anderson Baker**

Gillis, Ellis & Baker

**Jørn Gisvold\***

Norwegian Broker AS

**Greg LaMair**

LMC Insurance & Risk Management

**Gautam Boda\***

J.B. Boda & Company Pvt. Ltd.

**Glenn Horton**

The Horton Group, Inc.

**Pablo Lorant\***

LorantMMS, Seguros y Fianzas

**Bob Cawley**

RCM&D

**Tom Hughston**

RHSB

**Stefan Nill**

Leue & Nill GmbH

**T.C. Chau**

Ximco Corporation

**Jim Kapnick**

Kapnick Insurance Group

**Andy Sloan\***

The Magnes Group, Inc.

**Chris Duble**

Fred C. Church, Inc.

**Bob Klonk**

Oswald Companies

**Kurt Watson**

The IMA Financial Group, Inc.

*\*Regional Chair*